

Numerical Study of the Mechanical Behavior of Polymer Concrete

Ilhem Hawachi, Habib Sammouda

Abstract: *Polymer concrete (PC) represent a good alternative to traditional cementitious materials in the field of new building construction. In fact, PCs exhibit high compressive strength and ultimate compressive strain values, as well as good chemical resistance. Within the context of these benefits, in this paper we present a study on the mechanical behavior of polymer concrete. Here we propose to use the principles of homogenization to simulate the behavior of organic matrix concrete for different type of geometry of the aggregates and for the case reinforced with fibers. Compressive testing of the PC is firstly carried out to provide experimental benchmark for validation of the proposed numerical model. A numerical simulation of the model is then performed using COMSOL software and the compressive and bending stress-strain curves are obtained.*

Keywords: *polymer concrete; simulation; characterization*

I. INTRODUCTION

The PC is a new type of concrete in which the matrix is polyurethane polymer substituting the conventional cement mortar, the aggregate is crushed stone. The PC material has better toughness properties, better fatigue performance and better pavement behavior compared with traditional asphalt and cement concrete [1], which qualifies it as a potential high-performance pavement material [2]. In the optimization process of the new material, the mechanical properties at high strain rate must be addressed, especially the response subjected to dynamic compression. Uniaxial compression test is the most common method for characterizing strengths of concrete materials [3, 4, 5]. The literature indicates that, as they have greater mechanical strength than cement concrete, they can save up to 50% of competing materials for special applications. This type of concrete is used in construction, especially public or commercial buildings. Due to their lightness and high structural performance, polymer-based materials have been widely utilized in recent years to strengthen existing construction that are subject to static and seismic loads. Their general mechanical features [6] and constructive details [7] have been investigated in previous studies. Normally in the numerical simulations, polymer concrete was assumed to be isotropic and homogeneous. Whereas, polymer concrete materials are very complex, which make the material behavior under loading very complicated.

Revised Version Manuscript Received on January 25, 2016.

Ilhem Hawachi, Laboratory of Energy and Material (LabEM-LR11ES34) University of Sousse-Tunisia, ESSTHS, RueLamine Abbassi, 4011, Hammam Sousse, Tunisia

Habib Sammouda, LETTM- University of Tunis-Manar-Tunisia, Faculty of Science of Tunis, Tunisia

Some macro-structure [8] and micro-structure [9] models also have been developed to analyze the mechanical behaviour of polymer concrete materials. In order to obtain the resin concrete with superior performance of the fibers can be added to the mixture. The addition of fibers, either continuous or discontinuous, with brittle matrix materials, significantly improves the fracture toughness and strength of the resulting composites [10-12]. Reis [13] studied the effect of natural fibers on the bending strength of a PC. He concluded that using natural fibers in composition of the PC increases the bending strength. Griffiths and Ball [14] determined the modulus of rupture and fracture toughness of a polyester PC using three-point flexural testing method. Multi-scale analysis for various materials with microscopic heterogeneity has been one of the major topics in both computational mechanics and materials science. Among some computational methods for the multi-scale analysis, the homogenization method has been successfully applied to the composite materials including polymer matrix composites (PMC) [15].

This paper proposes a multiscale approach for polymer concrete. The meso-mechanical model includes the explicit description of the heterogeneous material geometry, as well as a description for interaction between the matrix-aggregate, then treated the behavior of polymer concrete in macroscopic mode. In the first part will study a meso-scale model, aggregate model generated firstly, and the rest area is "filled" by resin. In this model the interfaces are not included and the perfect bonding between the aggregate and the matrix is assumed, then we will deal the case of a macroscopic model.

To study the law of behavior of polymer concrete at the macroscopic scale, a typical uniaxial compression loading sequence of epoxy based mortars, i.e. aggregate (sand)/resin mixtures, and one three-point bending test have been simulated utilizing the comsol software for finite element analysis of structures, The purpose of this work was to study the distribution of stress and displacements in models assuming elastic behaviour for the inclusion and elastoplastic behaviour for the resin.

II. Mechanical characterization of the polymer concrete to the micro-scale

2.1 Numerical modeling

The present procedure based on the finite element method is described in this section. Here, the large aggregates are introduced into the new homogenized matrix to perform assumed virtual tests. Preparation of a concrete sample at a mesoscopic level suitable for two- and three-dimensional numerical simulations is described with the emphases on two essential steps: (i) geometry preparation and (ii) generation of finite element mesh.

Numerical Study of the Mechanical Behavior of Polymer Concrete

A numerical prediction of the non-linear behavior of concrete on a microscale is described in this section. The obtained material properties are then utilized for the finite element simulations at the microscopic level. Therefore, concrete is seen as a two-phase system Figure.1: the inclusion embedded in an infinite matrix To evaluate the mechanical behavior of resin/aggregate mixtures, several two-dimensional simulation models of the microstructure of the resin/ aggregate mixture were developed and subsequently modeled, using the finite element method.

In first part we will study the influence of inclusions of geometry on the behavior of materials

In the second part it was assumed that the aggregate phase in the model consists only of spherical particles. In the case of the model, each circular particle is positioned at the centre of a virtual square of size 1x1 mm (Figure.1).

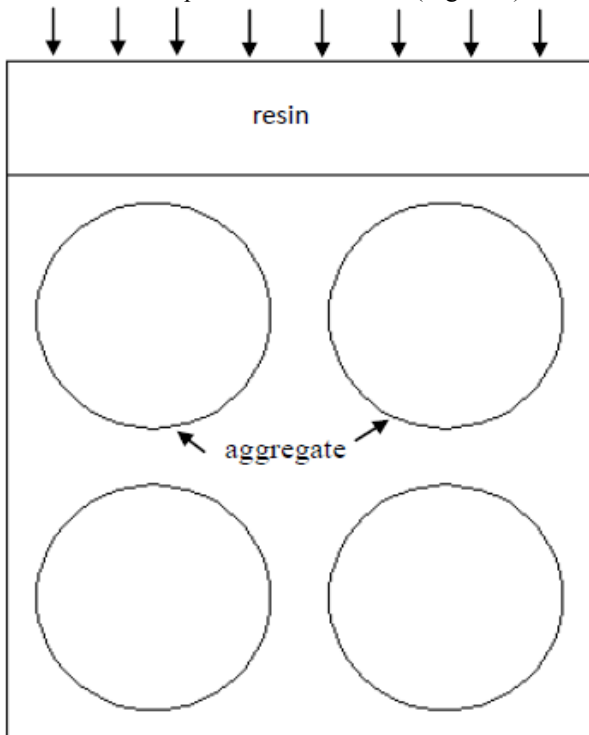


Figure.1 Geometry of model

2.2 Effect of the nature of the inclusions on the behavior of the resin concrete

The objective of this research is to develop micro concrete made of a polyester resin binder using two types of inclusions, sand and gravel.

2.2.1 Materials used

The materials used are sand, a gravel and a binder consisting of a liquid polyester resin, 1.11g/cm³ density, flammable, viscosity 20 dPa.

The studied composite is assumed composed of a matrix, denoted by the index "r", and inclusions denoted by the index "s". These inclusions may be aligned or randomly oriented in the matrix.

In the first part we will study the case where the inclusions are gravel, the model studied is shown in (Figure.2).

The gravel is modeled by square particles included in a resin matrix

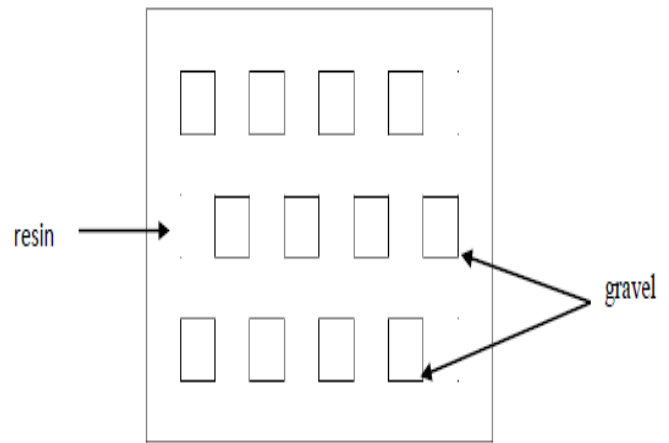


Figure 2: Geometry model at the microscopic level of the resin concrete

In the second part we will study the case or the inclusions have a spherical shape

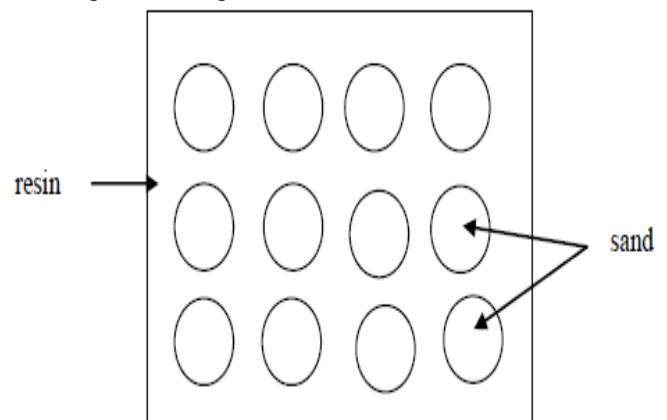


Figure 3: Geometry model at the microscopic level of the resin concrete

2.3 Influence of fiber content on the resin concrete

The mechanical properties of the resin concrete are improved by adding fibers which reduce the brittleness of these materials. In this section we present a simulation of the elastic behavior of a polymer concrete beam reinforced by glass fiber. The gravel is modeled by square particle and glass fibers by cylindrical particles oriented in space randomly (Figure.4).

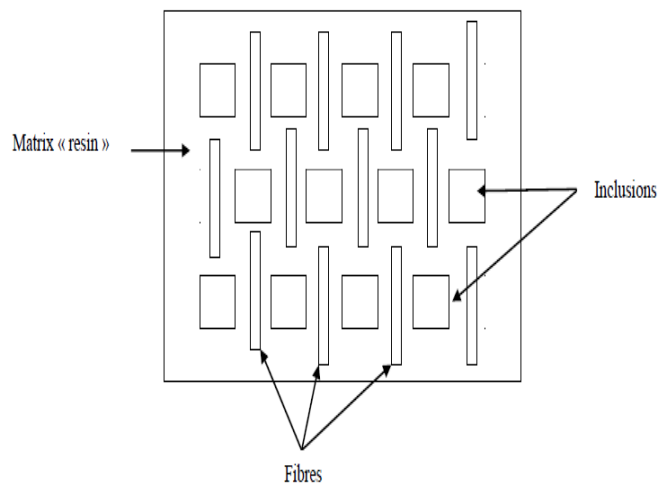


Figure.4: Geometry model at the microscopic level of the resin concrete reinforced by fibers

2.4 Loading and boundary conditions

The model was subjected to a vertical edge load of 10 MPa . This value was based on the laboratory results [16] and was intended to be in the range of linear elastic response of the resin/aggregate mixture. Additionally, symmetry on the x- and y- axes was considered.

In all cases, sand material was considered isotropic, homogeneous and elastic and the elastic modulus of the aggregate (sand) E_a was varied from 1000 to 15 000 MPa.

2.5 Numerical simulation of composites processing with preform deformation

During the liquid metal infusion, the viscous forces, and the capillary forces induce a compression stress field in the solid skeleton of the preform. The fibrous preform is then compressed during the filling phase processing, the injection phase and the compression phase are strongly coupled. In our study we will be presented a numerical model which describe the compression phase in the field of composites processing by infusion

III. Mechanical characterization of the polymer concrete to the macro-scale

The main objective of this research work is to study the structural behavior of the polymer concrete. There has been quite extensive research done in the field of using polymers in construction materials [17]. From a mechanical (macroscopic) point of view, there are several fundamental properties to have namely, the compressive stress-strain curve, the flexural strength and the static elastic modulus, So in this part of numerical modeling of a compression test and a bending test will be studied.

a. Mechanical testing procedures

The sand used is of rather uniform particle size, The specific gravity was 2.65 g/cm³, and the fineness modulus was 2.5. The resin content was 12% by weight, no filler was added and 88% of aggregates complete the PM formulations.

To study the behavior law of concrete a uniaxial compression tests are conducted on 50 ×100 mm PC cylinders and 400 ×75 ×75 mm P C beams are used for three-point bending tests. The specifications of this standard, in terms of specimen geometry and span length, are similar to

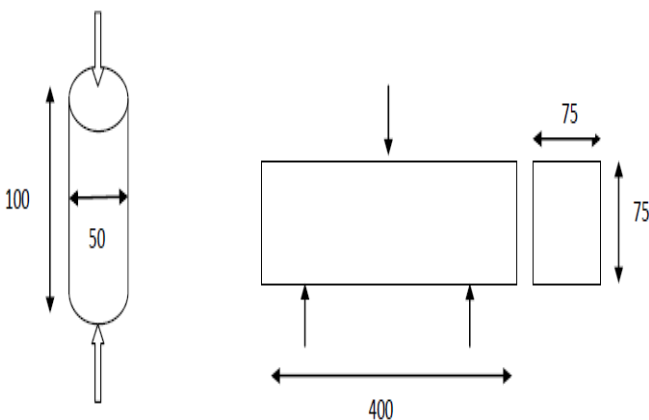


Figure 5 : Dimensions of the compressive and bending models.

IV. Results and discussions

4.1. Mechanical behavior of polymer concrete at the microscopic scale

The distribution of stresses and displacement are plotted for the model along a horizontal line that passes through the centers of the lower grains in each block.

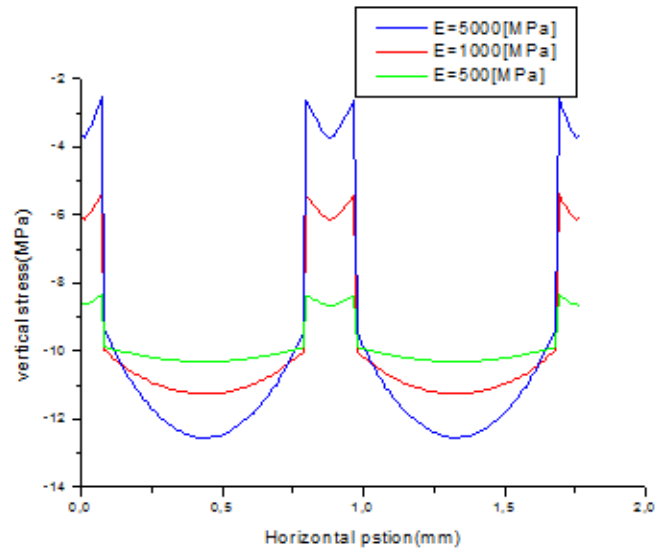


Figure.6 : Distribution of vertical stress and varying aggregate properties.

Figure.6 presents the distribution of the vertical stress, S_{yy} for model for varying values of E_a . Results show that compressive loading is transferred to the sand particles, while the resin carries practically very little load.

The Figure.6 indicates that the equivalent Young's modulus increase with increase of the Young's modulus reinforcements, Also, the variation of E affect the vertical stress.

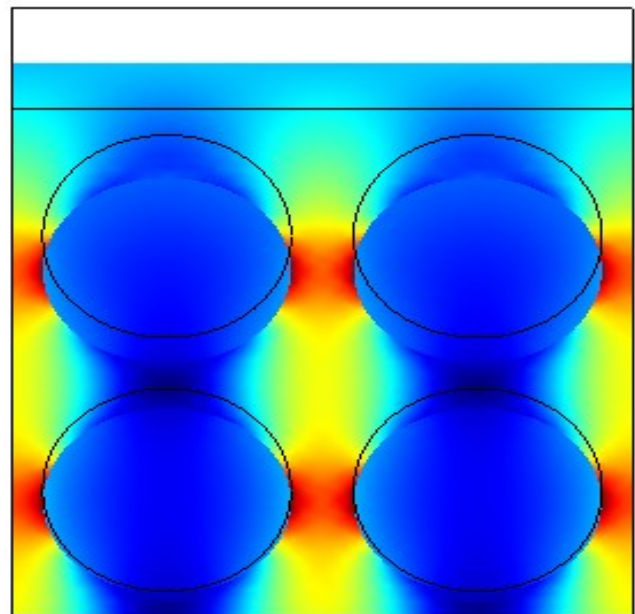


Figure.7 Screenshot of the stress distribution y

Figure 7 shows the movement of particles under the effect of the applied stress, it is noted that the particle movement follows the movement of the infusion of the resin.

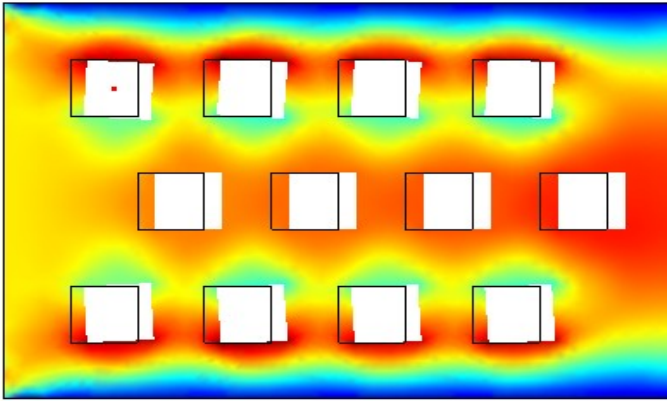


Figure.8 Isovalue speed of resin

Results show that compressive loading is transferred to the sand particles; the displacement of the particles follows the direction of infusion

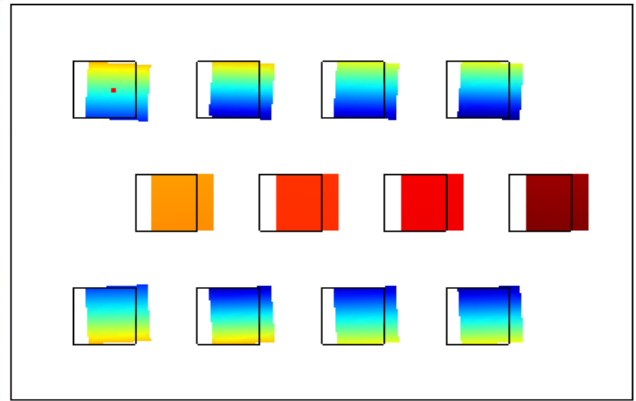


Figure.9 Particle displacement

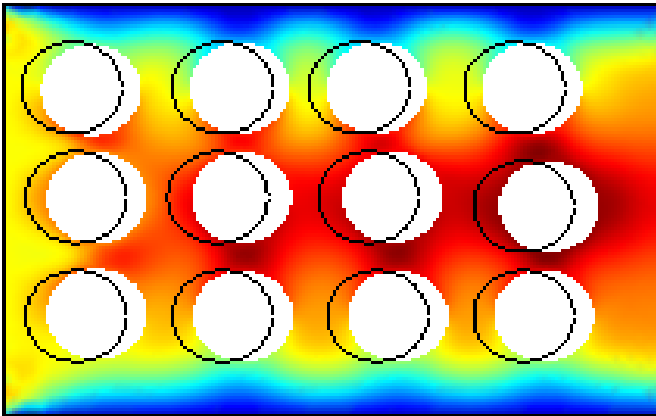


Figure.10 Isovalue speed of resin

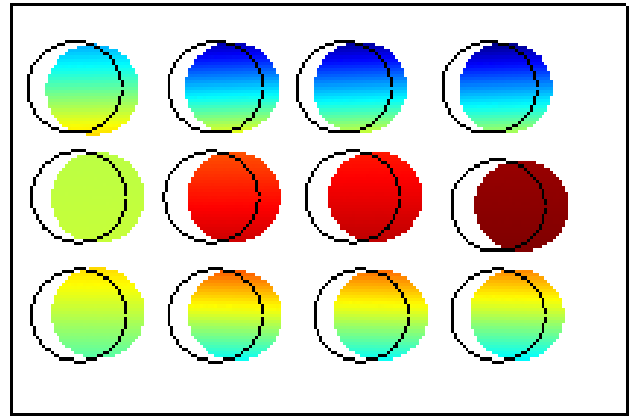
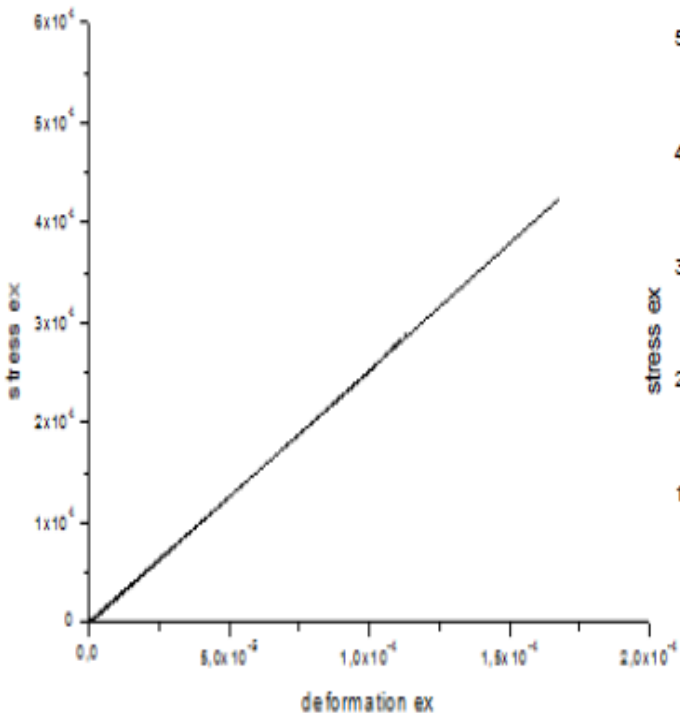
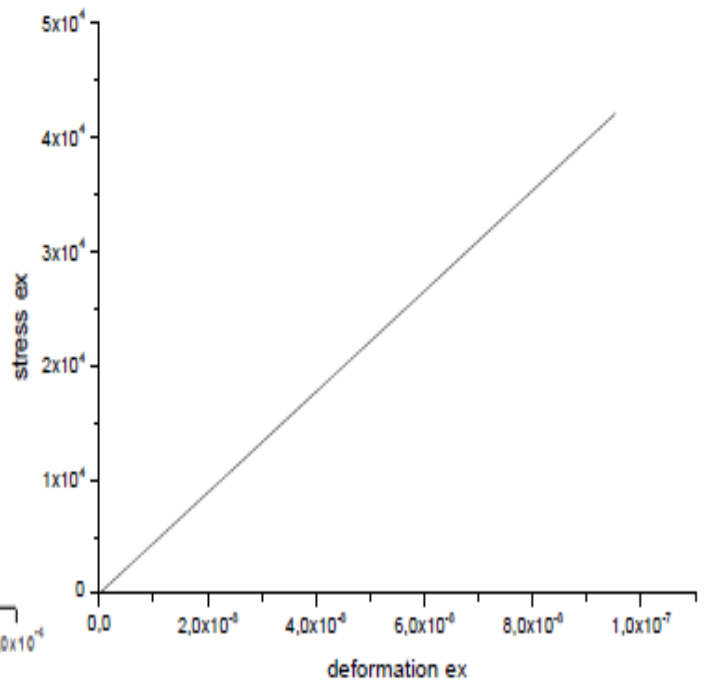


Figure.11 Particle displacement

Figures 12 and 13 Compares the deformation of inclusions for both types (gravel and sand), we find that the deformation of the sand is less important than gravel



(A)



(B)

Figure.12 curve stress-deformation of gravel

Figure.13 curve stress-deformation of sand

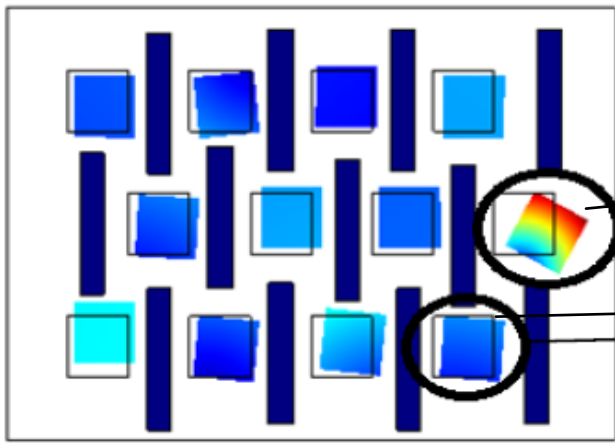


Figure.14 Particle displacement

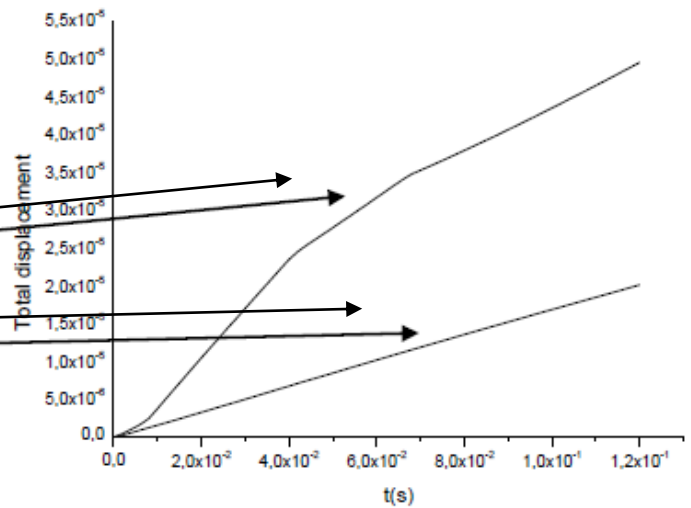


Figure.15 displacement during time

The figure.15 shows that the movement of the particles is more important in the absence of fibers which shows the importance of strengthening of building materials by fibers which provides better resistance to stress

4.2. Mechanical behavior of polymer concrete at the macroscopic scale

4.2.1. Bending tests

The PC responses in flexural tests are illustrated on the Figure 16 and 17, respectively.

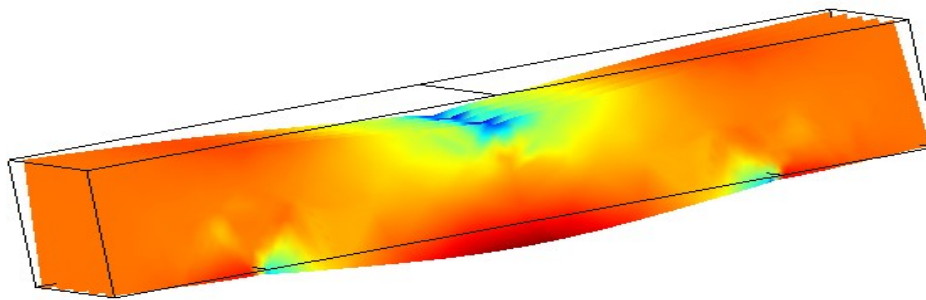


Figure.16 Screenshot of the stress distribution (3D)

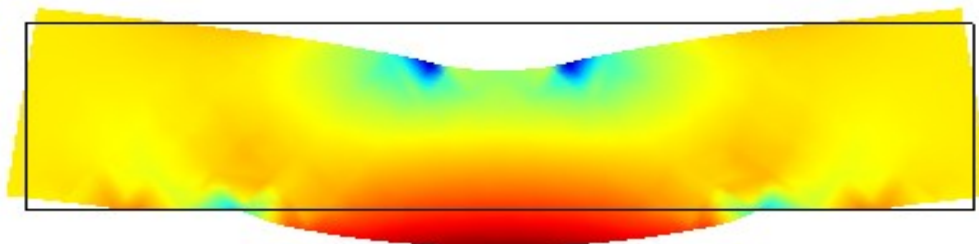


Figure.17 Screenshot of the stress distribution (2D)

Figure.16 present the distribution of the flexion strains of the polymer concret. The red area in Figure 17 signifies the location of the maximum stresses that lead to the formation of the flexural crack. This is in accordance to the observed behavior of the beam during the experimental results [18].

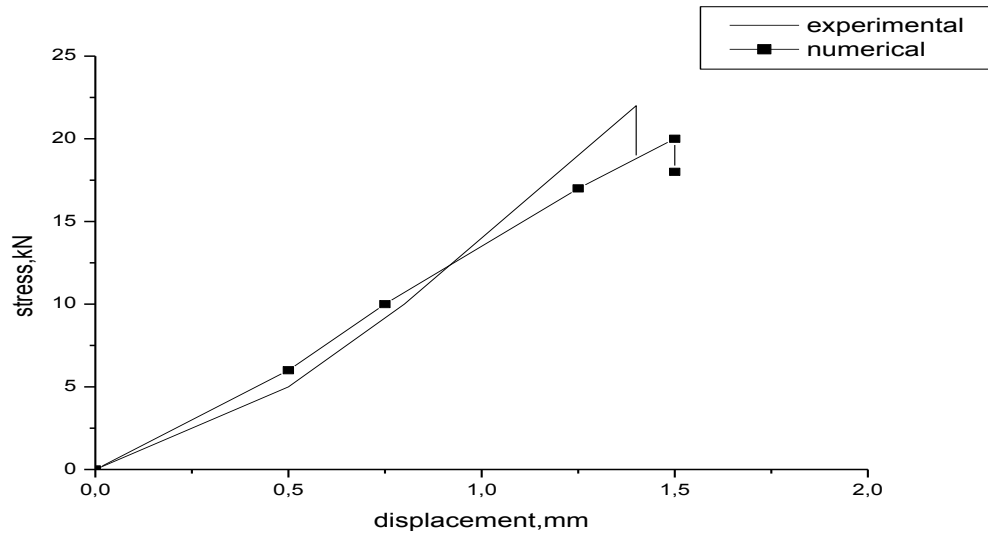


Figure.18 Bending behavior [18]

The stress–displacement curves vary linearly which involves the viscoelastic character of the polymer and after maximum applied load, it decreases by a soft slope to rupture

4.2.2. Compression tests

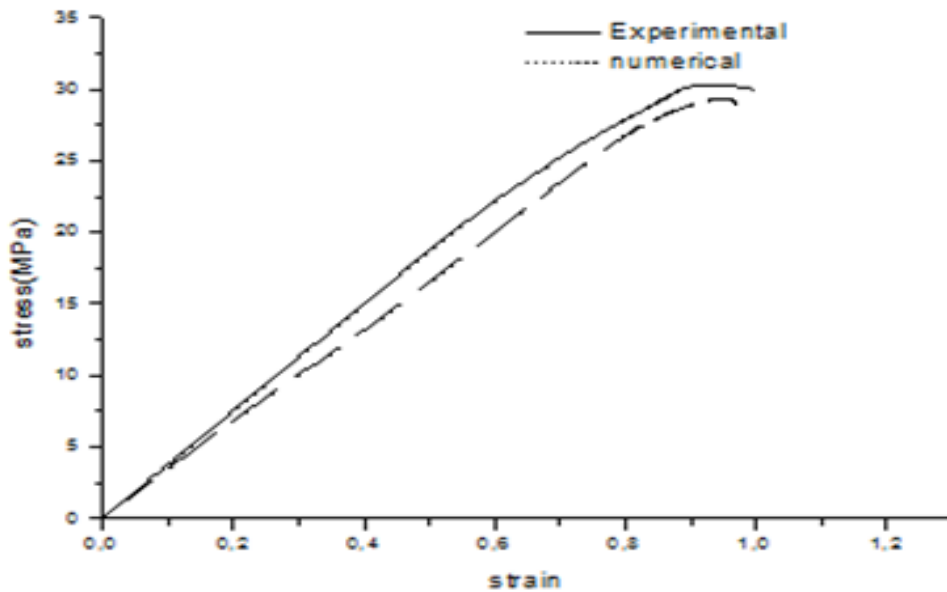


Figure.19 Compression behavior

It appears that behaviour in compression is nonlinear. This nonlinearity is more due to the damage of the loaded PC than to the viscous character of the polymer.

4.3. Behavior of polymer concrete reinforced

A three points bending test is applied to a concrete polymer reinforced with steel bares, the numerical simulations highlight a high stress migration toward the reinforcement bars due to the effect of viscous flow in polymer concrete.

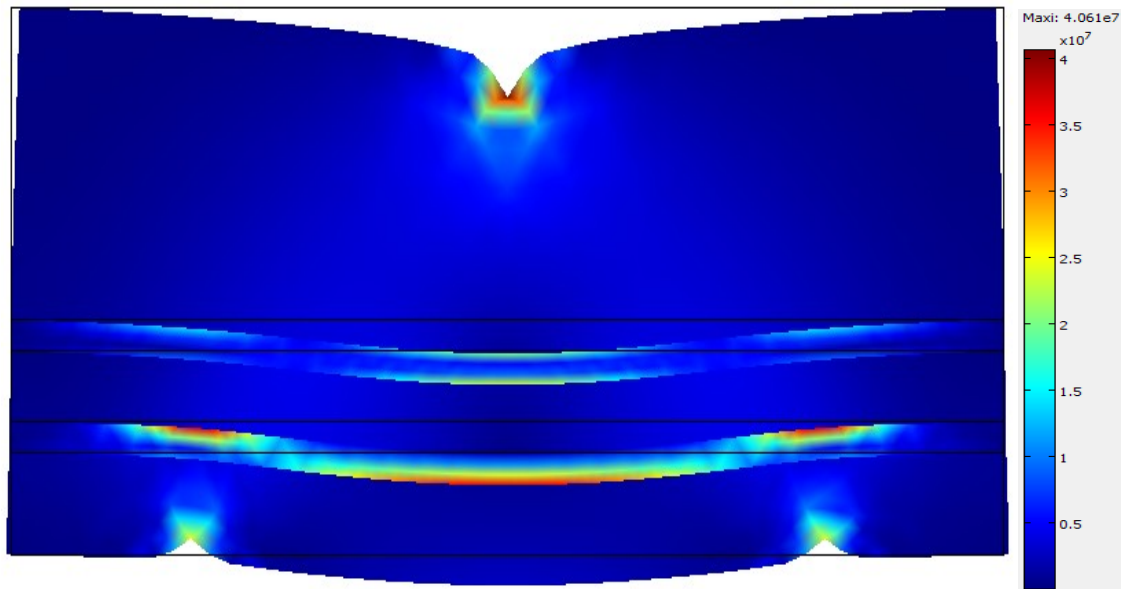


Figure.20 Isovalue of stress

V. CONCLUSION

In this article it was established a numerical study describing the behavior of polymer concrete to the micro and macro scale and then to study the case of internally reinforced concrete by carbon fiber and externally by conventional steel reinforcement, and strains in different materials. two two-dimensional model types were prepared and numerically modelled in order to allow for different configurations of aggregate mixtures, The calculated stress and displacement distributions obtained for the different models are compared. Results indicate that the prominent failure mechanism is plastic deformation of the resin, especially in areas where voids are present (partial filling of voids with resin). The numerical simulations highlight relevant stress migration from the polymer concrete toward the reinforcement bars. A test uniaxial compression and bending loading of epoxy based mortars, i.e. aggregate (sand)/resin mixtures, was simulated utilizing the COMSOL software for finite element analysis of structures. Our numerical result seems to match specimen behaviour when compared to the experimental results (Figure.18 and 19).

Conflict of Interest : have no conflict of interest

REFERENCE

1. H. Abdel-Fattah and M. M. El-Hawary, Flexural behavior of polymer concrete, *Construction and Building Materials*, vol. 13, no. 5, pp. 253–262, 1999.
2. M.M. Shokrieh, M. Heidari-Rarani, M. Shakouri, E. Kashizadeh, Effects of thermal cycles on mechanical properties of an optimized polymer concrete, *Construction and Building Materials*, Volume 25, Issue 8, August 2011, Pages 3540–3549
3. Yong-chang Guo and all., Compressive behaviour of concrete structures incorporating recycled concrete aggregates, rubber crumb and reinforced with steel fibre, subjected to elevated temperatures, *Journal of Cleaner Production* 72 (2014) 193e203
4. Kyu-Seok Yeon and all., Deformation behavior of acrylic polymer concrete: Effects of methacrylic acid and curing temperature, *Construction and Building Materials* 63 (2014) 125–131
5. [5] Walter O. Oyawa and all., Polymer concrete-filled steel tubes under axial compression *Construction and Building Materials* 15 (2001) 187-197.
6. Ghobarah, A.; El-Amoury, T. Seismic rehabilitation of deficient exterior concrete frame joints. *J. Compos. Constr.* 2005, 9, 408–416.
7. Ascione, L.; Berardi, V.P. Anchorage device for FRP laminates in the strengthening of concrete structures close to beam-column joints. *Compos. B Eng.* 2011, 42, 1840–1850
8. Shigang Ai and all., Numerical analysis on failure behaviour of polyurethane polymer concrete at high strain rates in compression, *Computational Materials Science* 69 (2013) 389–395.
9. Z. Agioutantis and all., Numerical simulation of the mechanical behaviour of epoxy based mortars under compressive loads, *Computers and Structures* 80 (2002) 2071–2084.
10. Verma et al. , Coir Fibre Reinforcement and Application in Polymer Composites: A Review, *J. Mater. Environ. Sci.* 4 (2) (2013) 263-276
11. J. Toma's San-Jose and all. Reinforced polymer concrete: Physical properties of the matrix and static/dynamic bond behaviour, *Cement & Concrete Composites* 27 (2005) 934–944.
12. Valentino Paolo Berardi, Geminiano Mancusi, A mechanical model for predicting the long term behavior of reinforced polymer concretes, *Mechanics Research Communications* 50 (2013) 1– 7.
13. Reis, JML, Fracture and flexural characterization of natural fibre reinforced polymer concrete. *Constr. Build Mater.* 20(9) (2006) 673-678
14. R. Griffiths, A. Ball, An assessment of the properties and degradation behavior of glass-fiber-reinforced polyester polymer concrete, *Compos Sci Technol*, 60 (14) (2000), pp. 2747–2753
15. H. Aboubak and all., Creep of epoxy-clay nanocomposite adhesive at the FRP interface: A multi-scale investigation Sherif , *International Journal of Adhesion & Adhesives* 54 (2014) 1–12.
16. Agioutantis Z, Sisoura D, Klefakis S. Physico-chemical and mechanical properties of natural and chemically reinforced sands. *Mineral Wealth* 1999;110:41–8
17. Gabriel Oprisan And All. Application Of Modern Polymeric Composite Materials In Industrial Construction, *Bul. Inst. Polit. Iași, t. LVI (LX), f. 3*, 2010.
18. M.M. Shokrieh and all., Effects of thermal cycles on mechanical properties of an optimized polymer concrete, *Construction and Building Materials* 25 (2011) 3540–3549.
19. F.J.C. Del Vecchio and all., Elasto-viscoplastic behaviour of polyester polymer mortars under monotonic and cyclic compression, *Polymer Testing* 35 (2014) 62–72.